

ShaRA Project

Working Paper rev\_1 2023/05/29

# ShaRA#5: Where do we go?

*A project by Astro T-Rex and a «non Venetian»*

# Instrumentation

T1 @ ElSauce (Chile)  
Chilescope service

Filters:

Astrodon Halpha/Sii/Oiii 5nm  
RGB Turen Balance Gen II

Telescope	Type	CCD Camera	Price per hour
Telescopio 1	RC-1000 f/6.8 (6800mm focal length)	FLI Proline 16803 (37x37mm)	150\$
Telescopio 2/3	Newton 500 f/3.8 (1900mm focal length)	FLI Proline 16803 (37x37mm)	60\$
Telescopio 4	Tele 100mm f/2 (200mm focal length)	FLI Proline 16200 (27x22mm)	40\$
Telescopio 5	RH200 f/3 (600mm focal length)	FLI Proline 16200 (27x22mm)	50\$



# Target selection



FoV T3

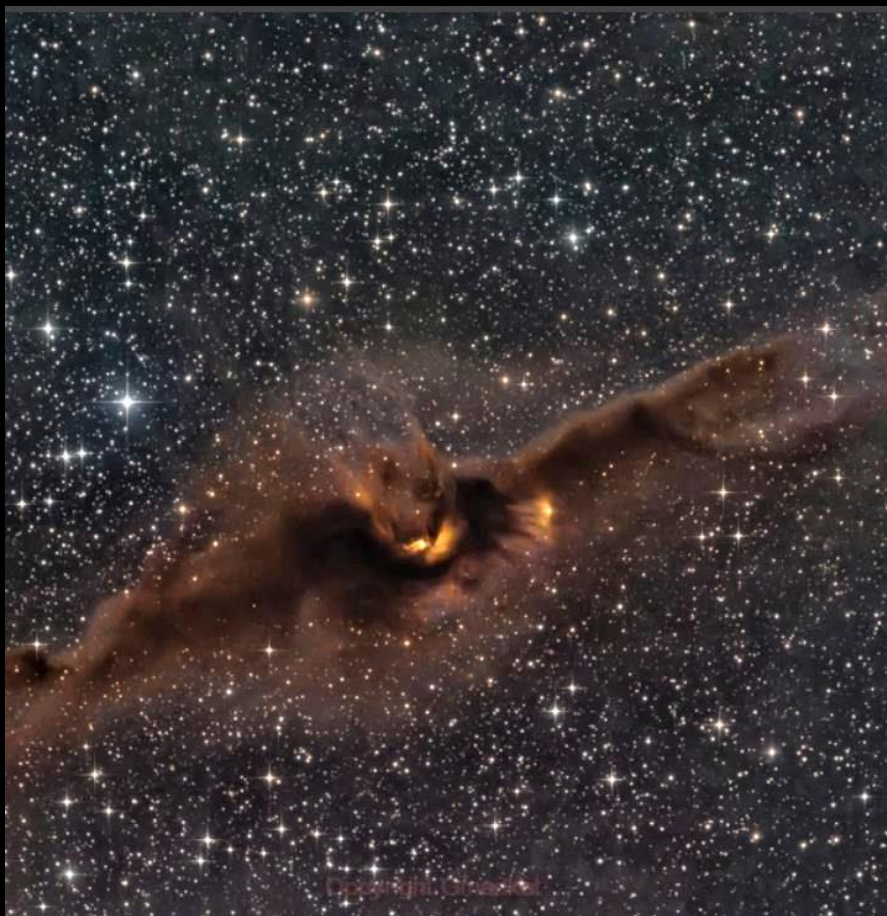


FoV T1

Molecular cloud in Corona Australis  
And Globular Cluster NGC6723



# Target selection



FoV T3 Chilescope



FoV T1 Chilescope  
(no available images with this focal length)

Dark Nebula LDN 43

# Target selection



T3 Chilescope



Copyright jebersole

T1 Chilescope

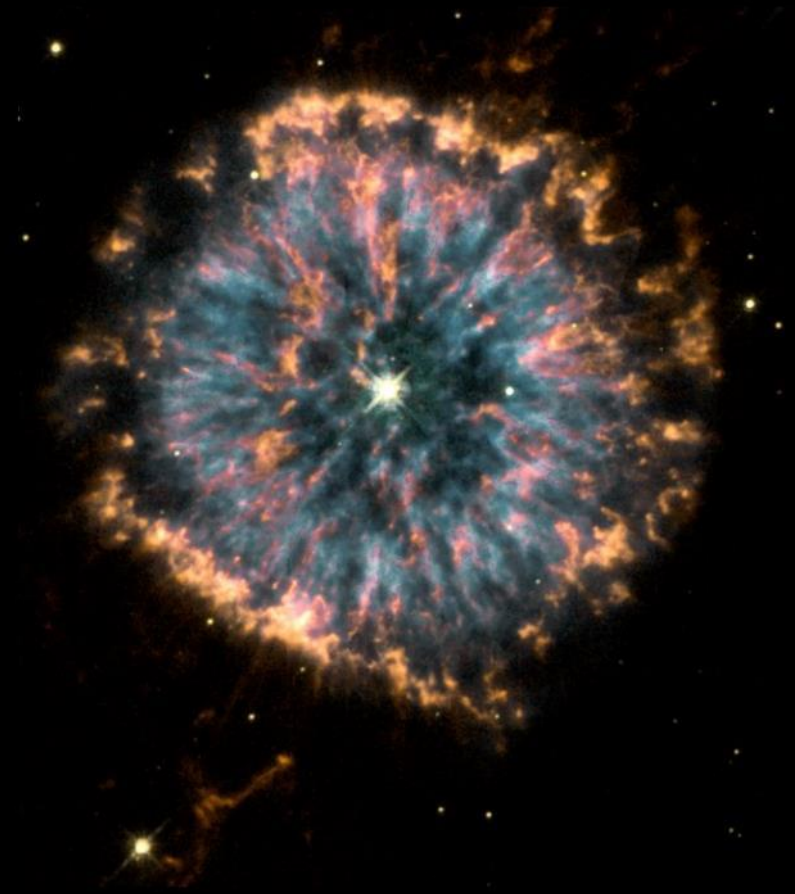
**Helix Nebula**  
*(one of the most photographed nebula of the Sky)*



# Target selection



Gemini Telescope 8m

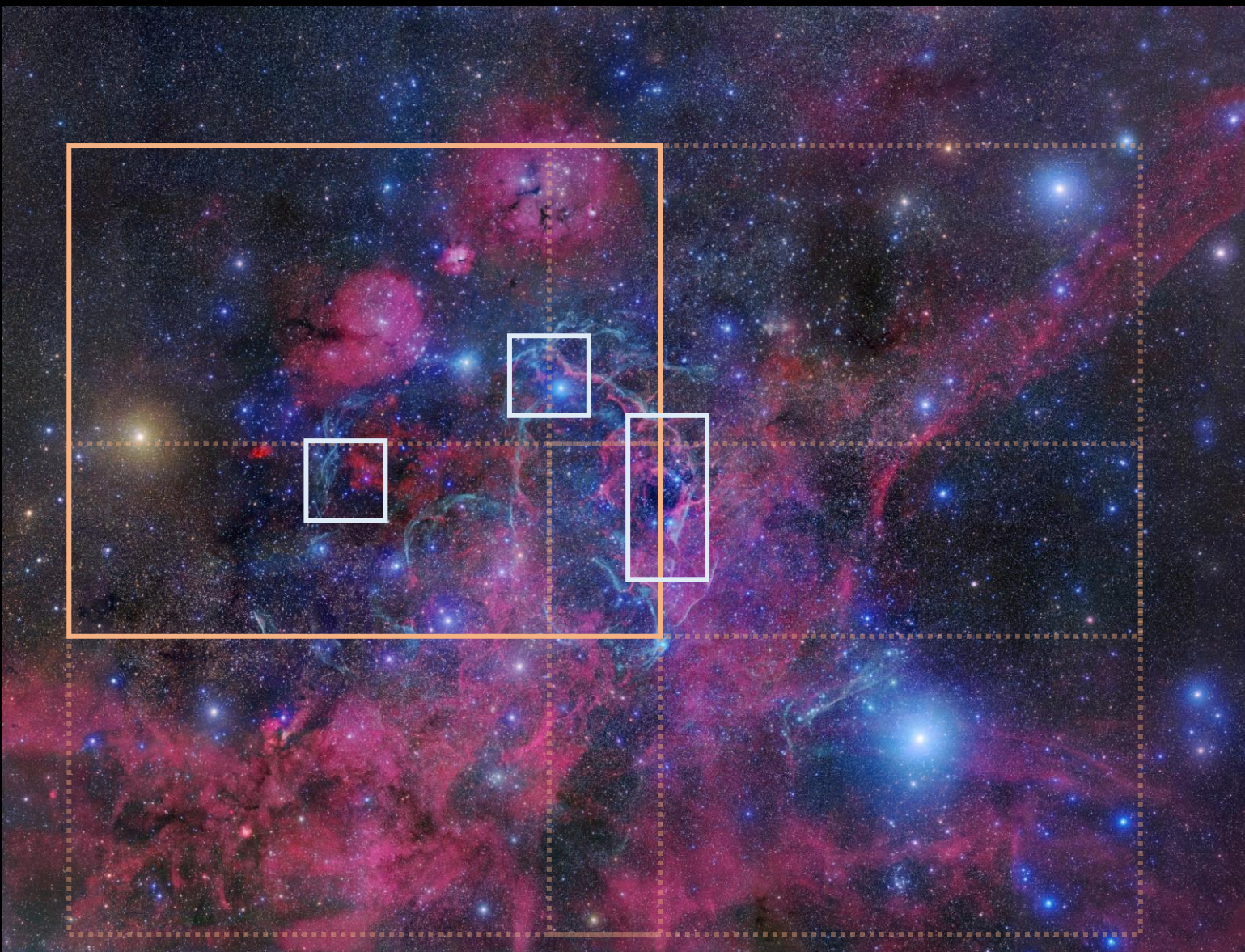


HST

NGC6751 Planetary Nebula  
*(no good amateur images available)*



# Target selection



VELA Supernova Remnant & its Pulsar

Wide field (mosaic with T4, framing TBD)

<http://www.robgendlerastropics.com/VelamosaicLL.html>



# Target selection



RC1000



HST

NGC4038/9 Interacting galaxies (Antennae)



# Target selection

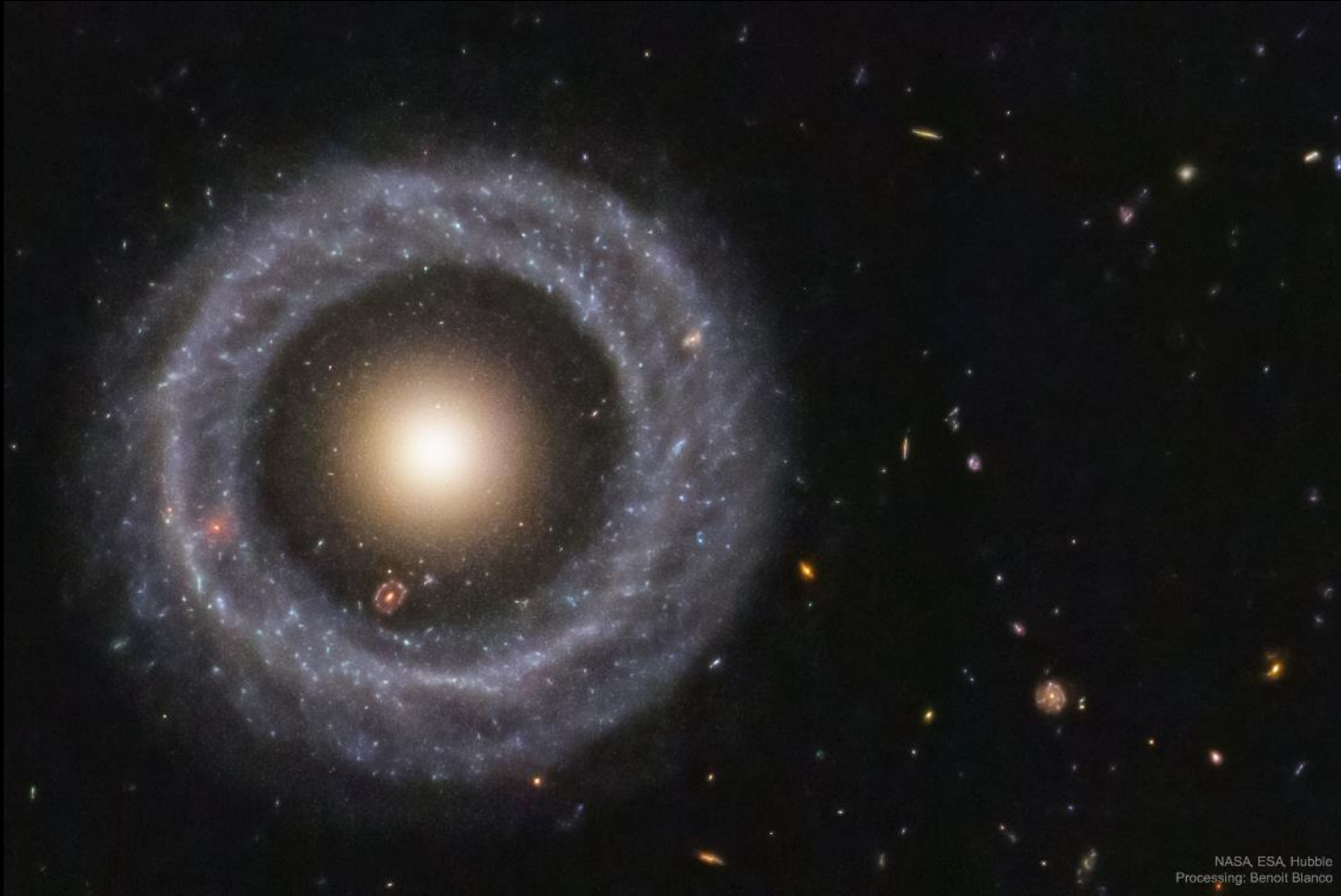


HST

NGC6300 Syfert Type II Galaxy

Ganymed 60cm-Hypergraph in secondary focus, f=4800 mm

# Target selection



HST

NASA, ESA, Hubble  
Processing: Benoit Blanc

NO T1/T2-3 IMAGE AVAILABLE



SW 12" Quattro f/4

Hoag's object



# Target selection



FoV T3



FoV T1

Coma Cluster Abell 1656

# Target selection

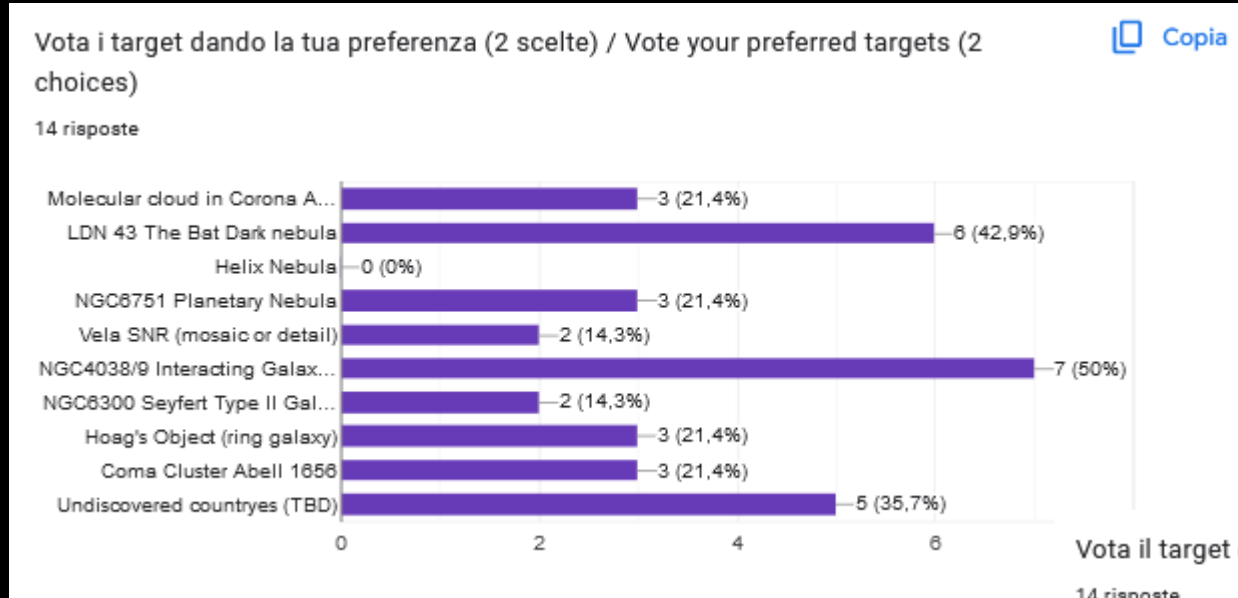
UNDISCOVERED COUNTRY

H-alpha regio, close to white dwarf....in order to find a Oiii bubble!!!!!!!!!!!!!!!!!!!!!!

TBD....

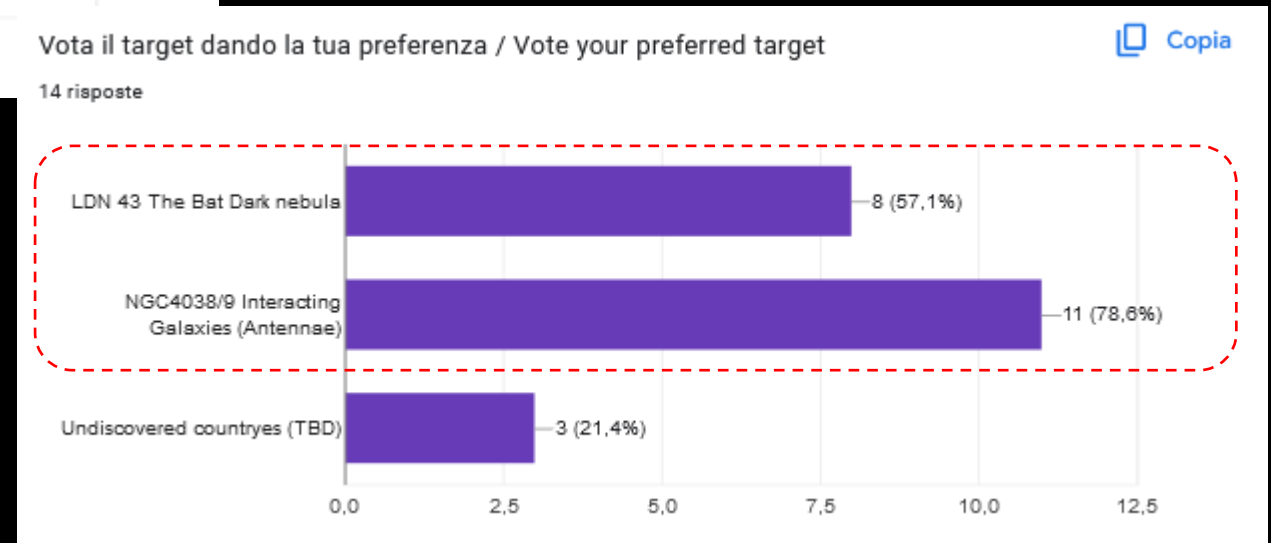


# Selected targets and Budget

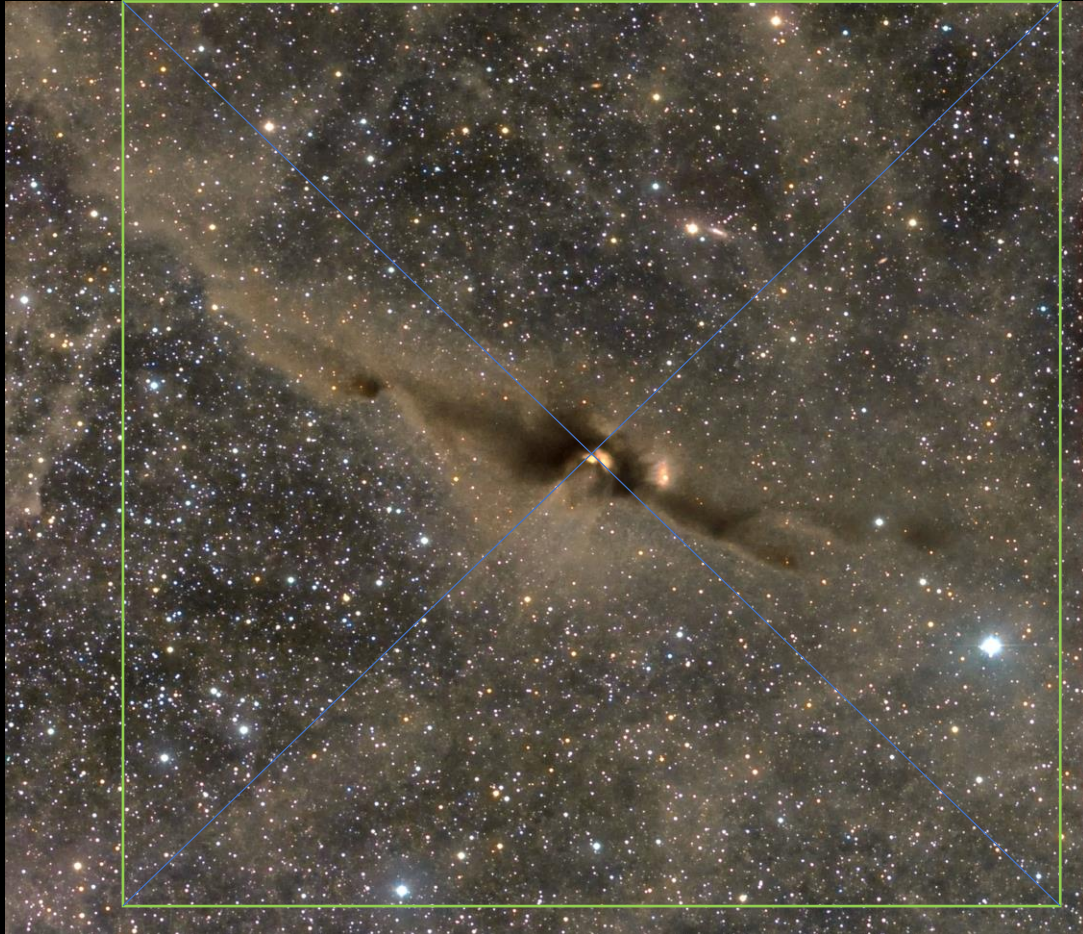


Potential budget: 600/650€ > 750/850pts

First and final selection



## Targets & FoV



Initial planning:

10x300s R bin1

10x300s G bin1

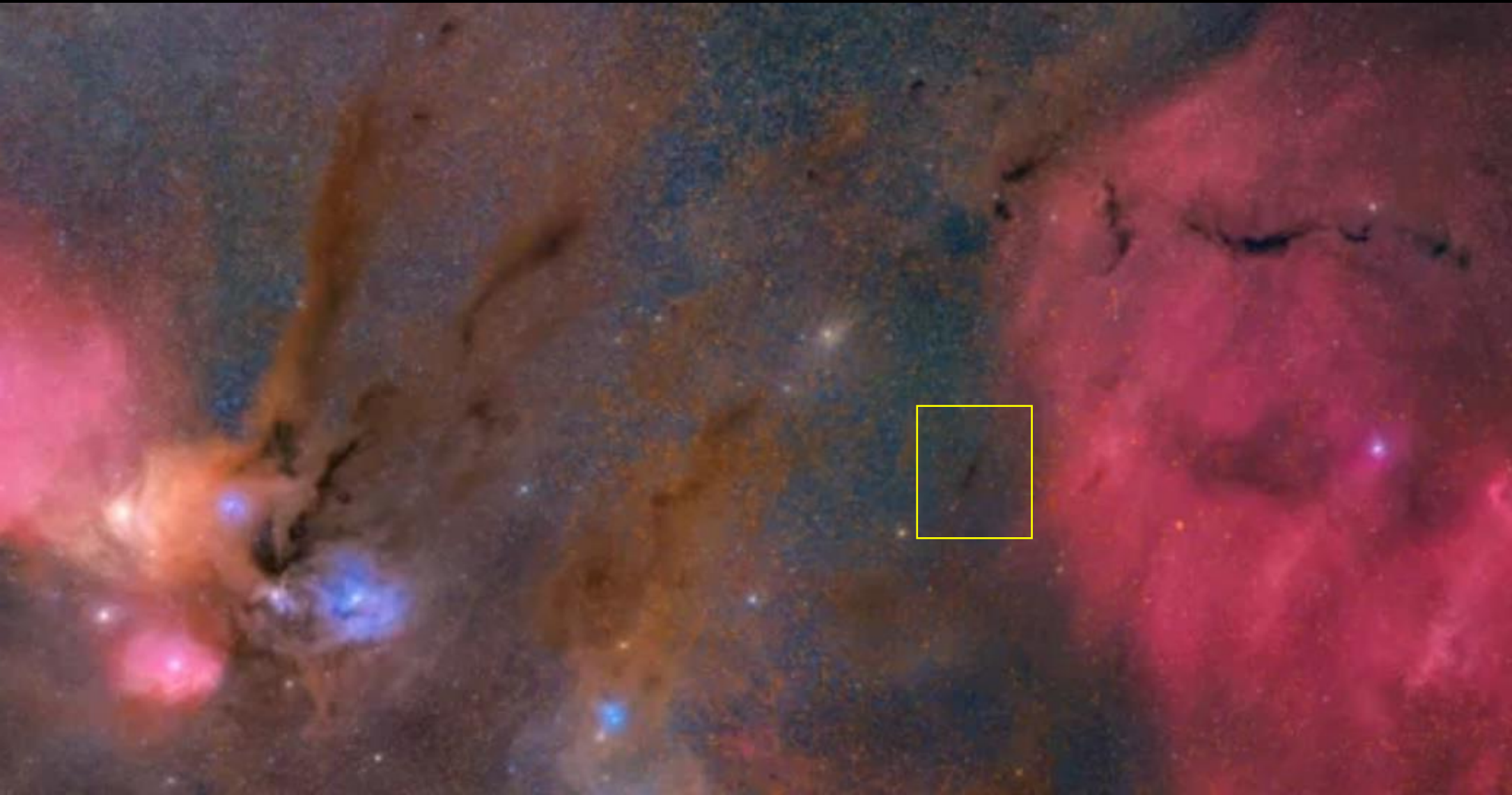
10x300s B bin1

34x300s L bin1

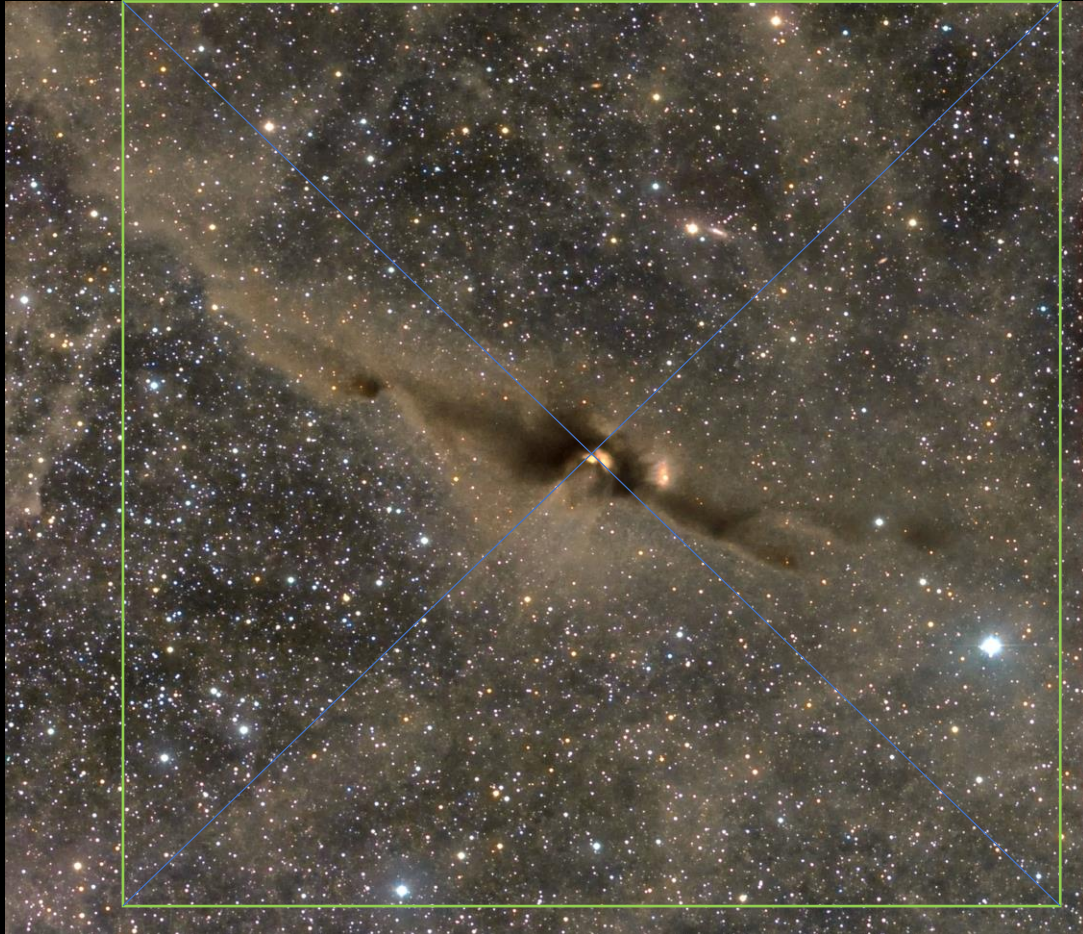
Total: 5.3 hours (174 points)



# Targets & FoV



## Targets & FoV



Final planning:

15x300s R bin1

15x300s G bin1

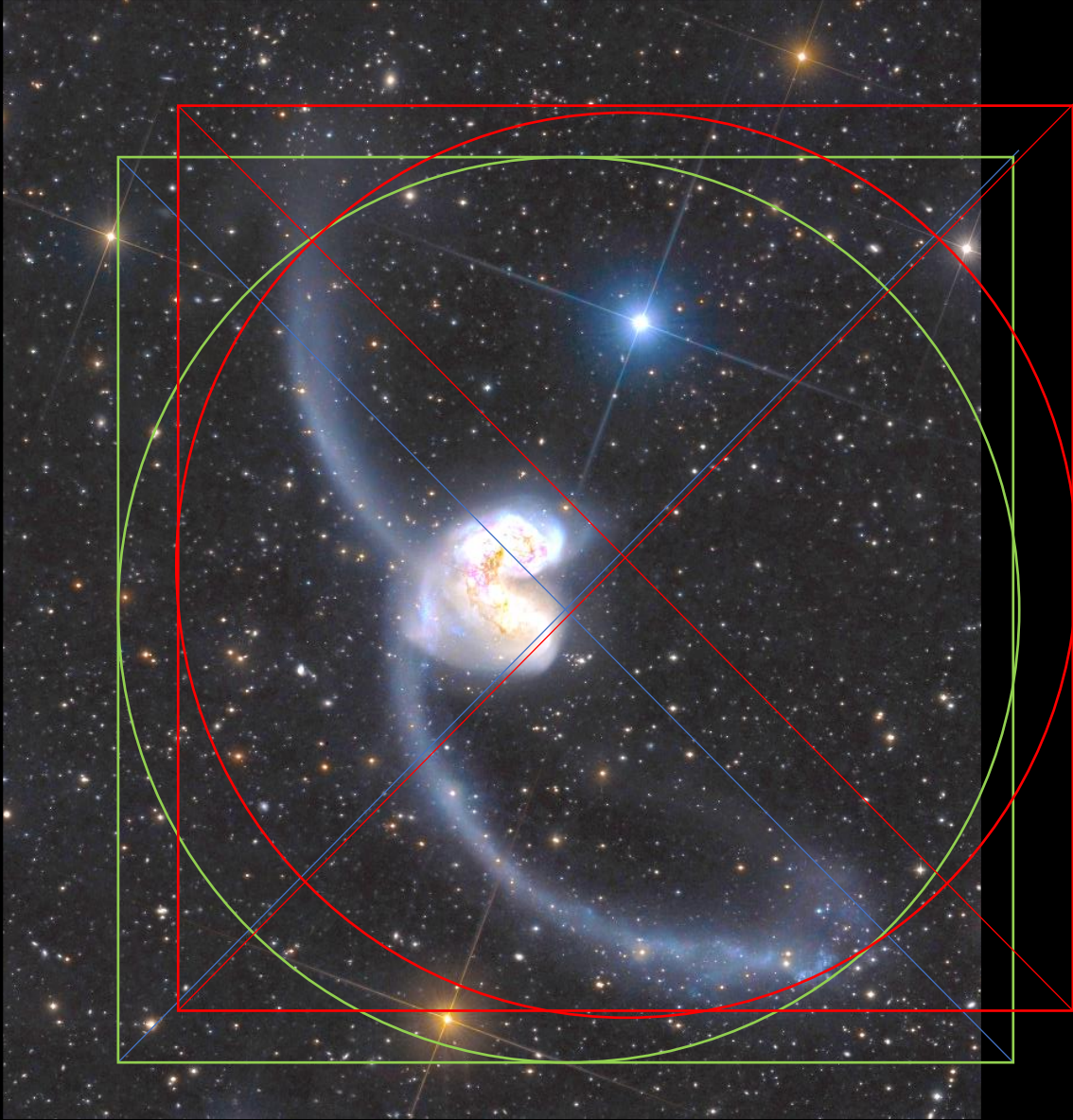
11x300s B bin1

48x300s L bin1

Total: 7.4 hours (240 points)



## Targets & FoV



### Initial planning:

8x600s R bin1

9x600s G bin1

9x600s B bin1

8x600s H bin2

25x600s L bin1

Total: 10 hours (630 points)